

S.U.A.P.

AMPLIAMENTO DI AZIENDA AGRICOLA CON
FORMAZIONE DI DEPOSITO e LOCALI ACCESSORI

OPERE DA ESEGUIRSI

Via Stretta, 187 - Brescia

Committente: Az. Agricola ROSSINI LUIGI

Timbro e Firma:

Via Stretta n° 187 - Brescia

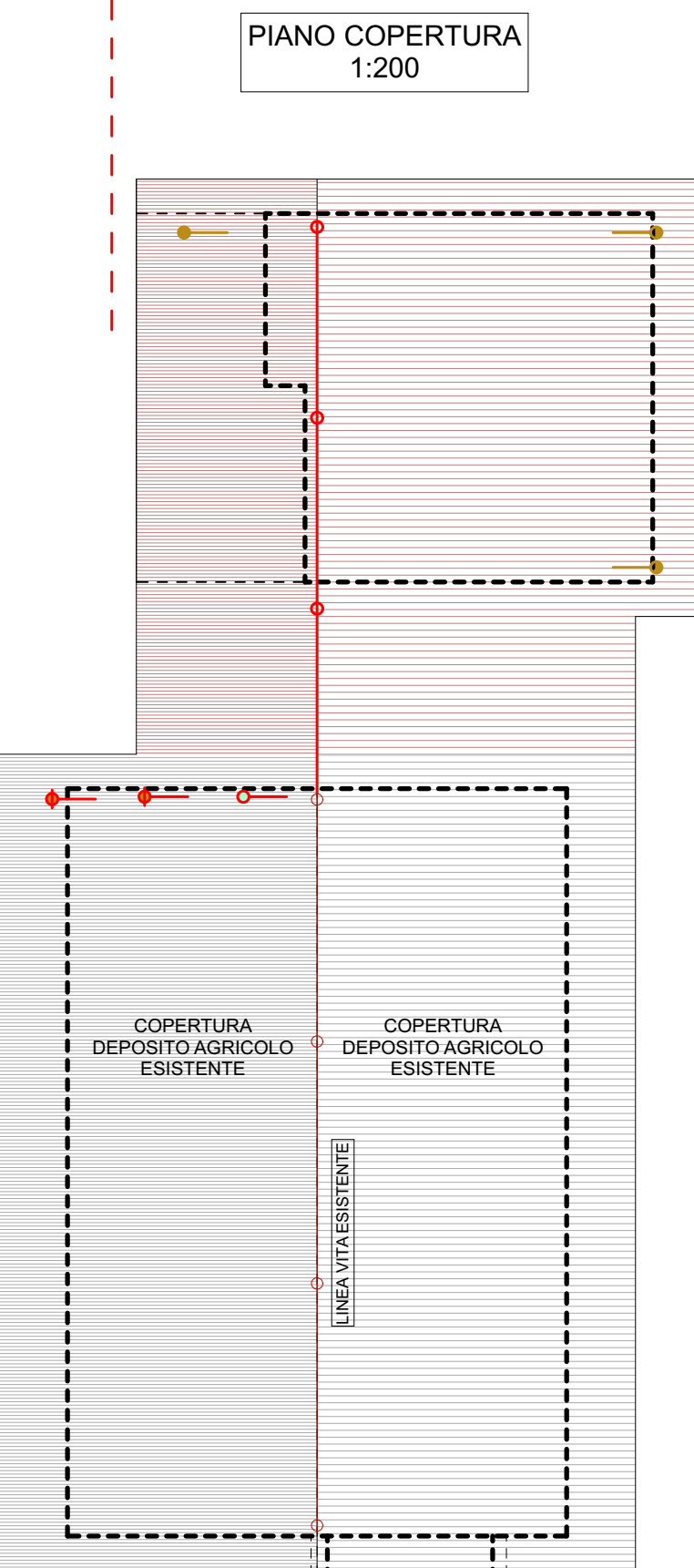
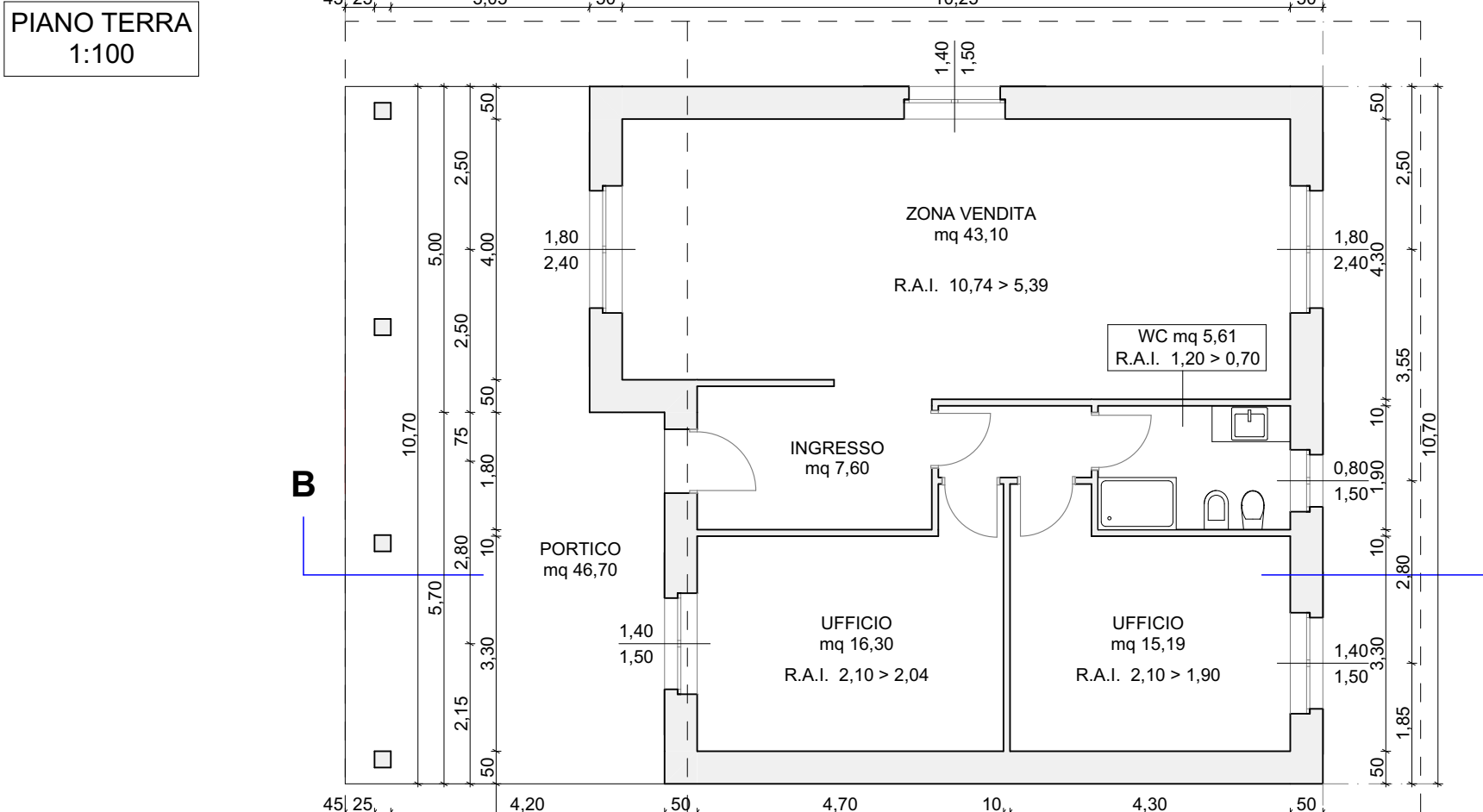
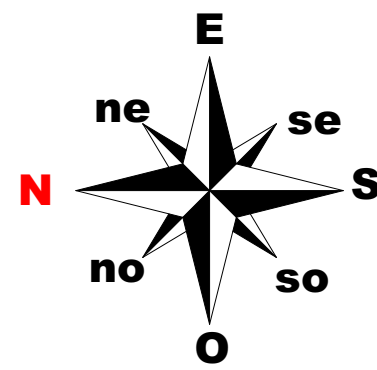
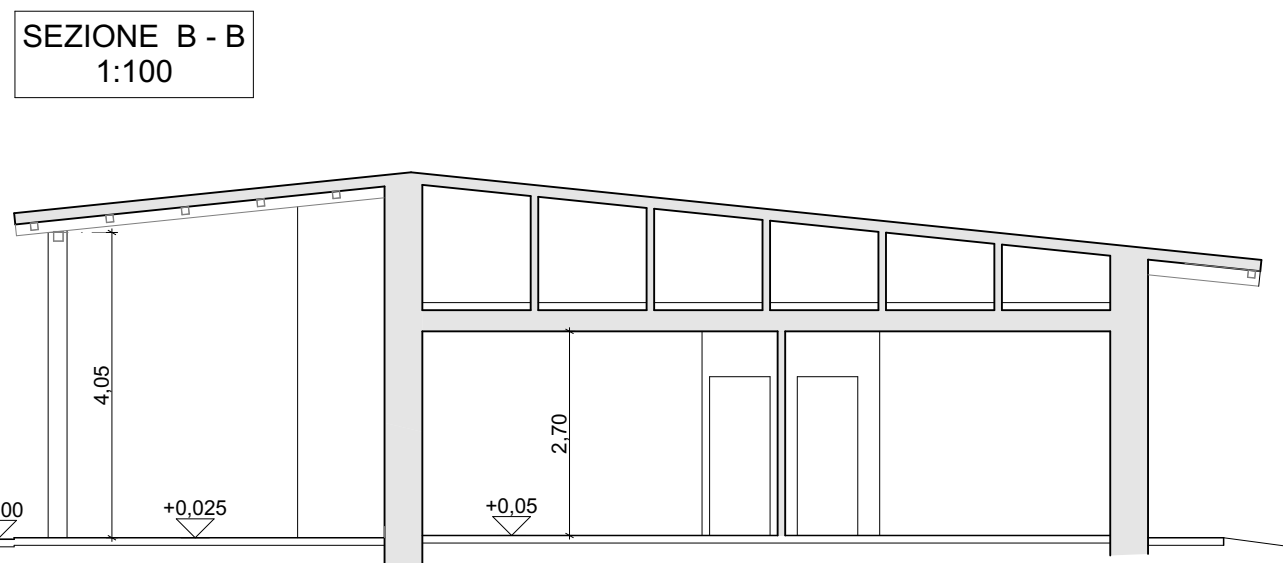
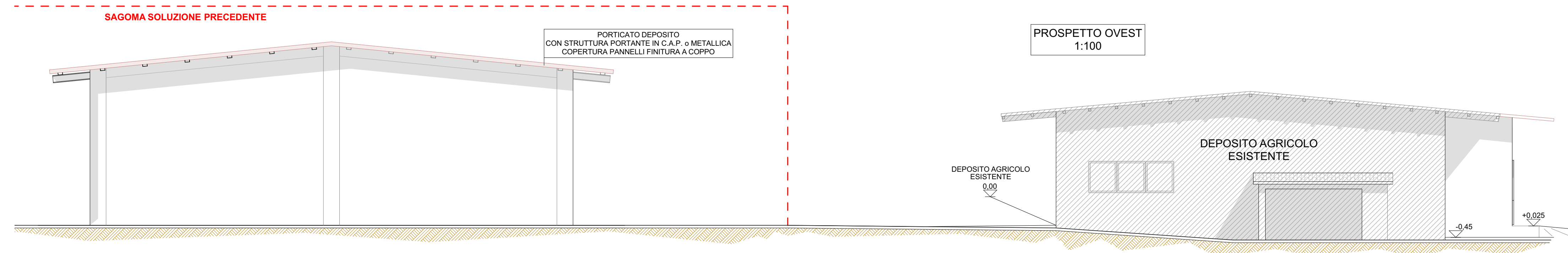
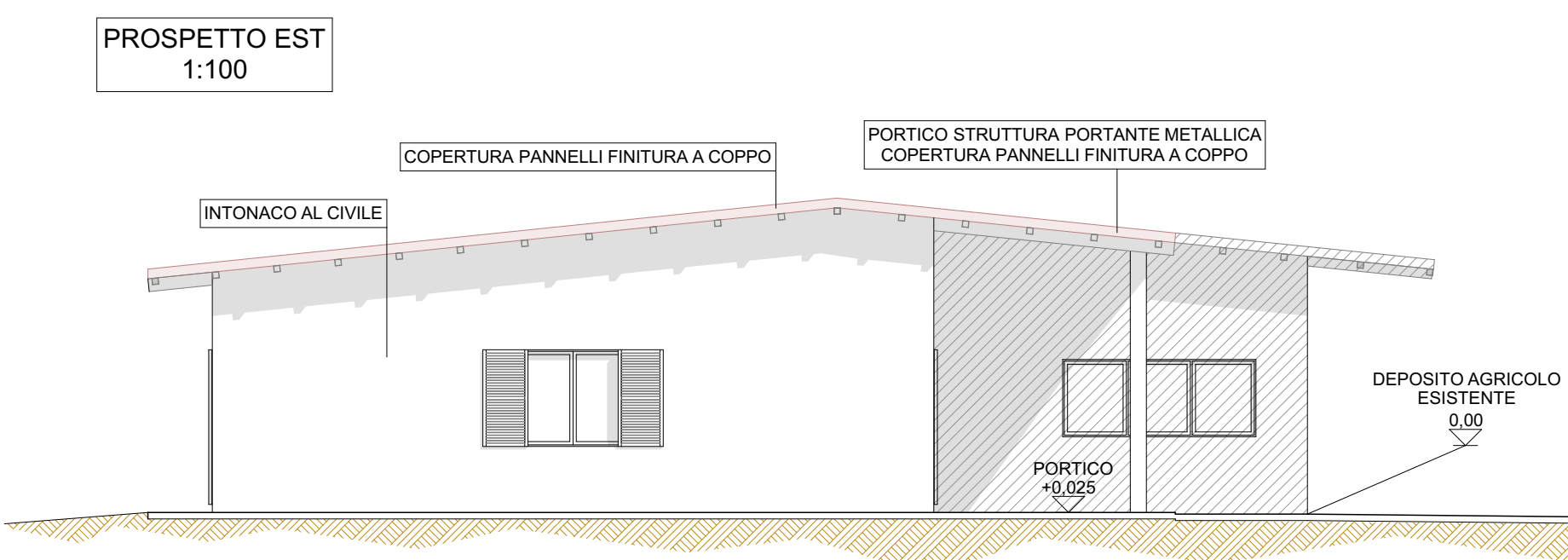
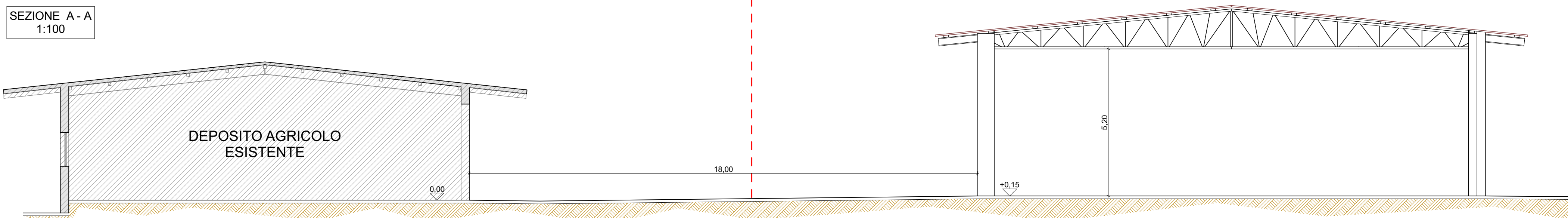
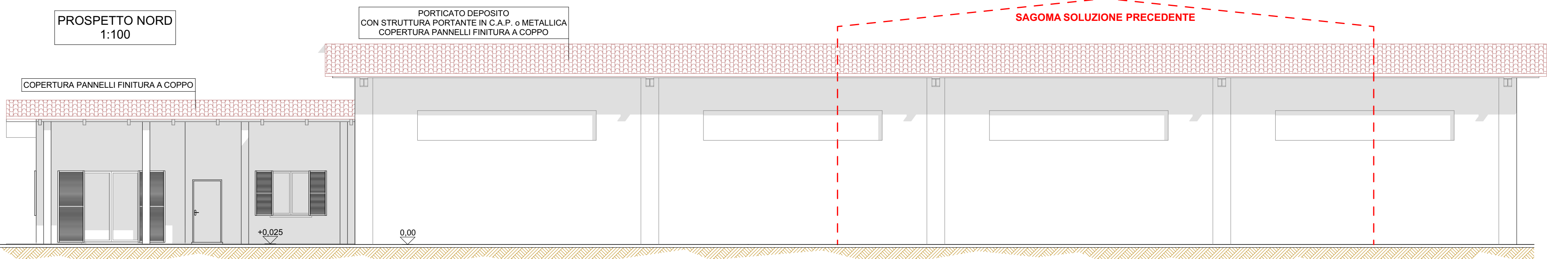
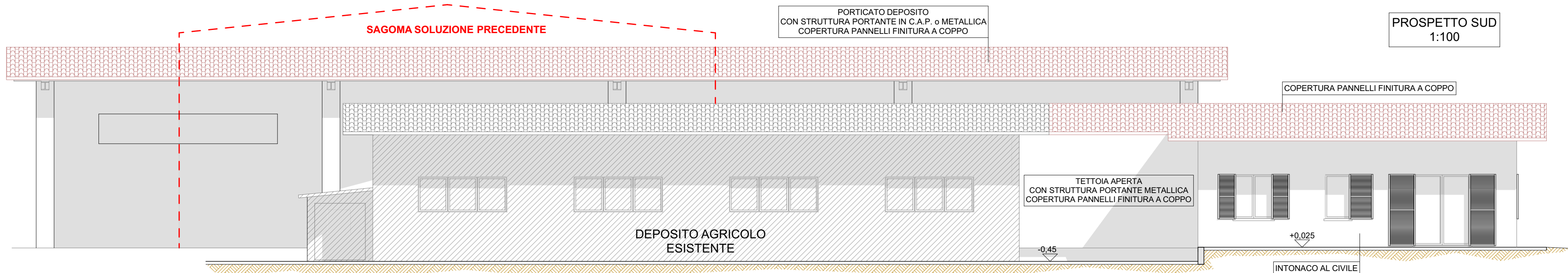
TAVOLA OGGETTO

05

PIANTE SEZIONI E PROSPETTI
PROGETTO

Pratica: 295 (0104) Disegnato: M.R.

Scala: 1 : 100	Aggiornamento: 18/03/2020 - 25/06/2020	Timbro e firma
Verificato: M.R. - P.L. - S.R.	Aggiornamento: 15/03/2021 - 07/06/2021	
Data: 30/12/2019	Aggiornamento: 04/10/2021	
Fase: S.U.A.P. - Rev. 05	Aggiornamento: 02/12/2021	



- LEGENDA
- Linea vita classe "C" UNI EN 755
 - graticcio a lame classe "C2" UNI EN 755 per accesso
 - graticcio a lame classe "C2" UNI EN 755 per accesso e antipendio
 - graticcio a lame classe "C2" UNI EN 755
 - graticcio a lame classe "C2" UNI EN 755 antipendio
 - Graticcio a lame classe "C2" UNI EN 755 antipendio
 - Graticcio a lame classe "C2" UNI EN 755 antipendio

